

# PROJECT SIGHTLINE

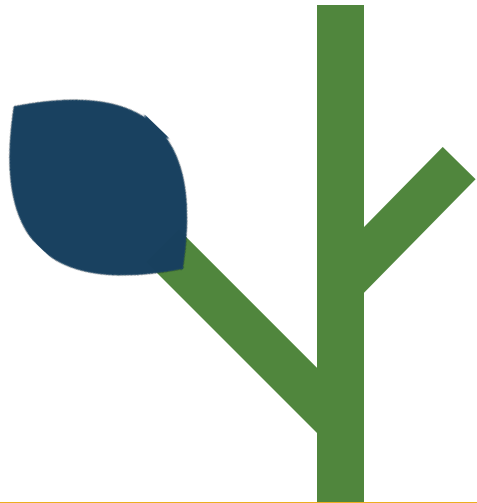


CREATING A MORE **INVITING,**  
**HOSPITABLE,** AND **SAFE**  
PLACE TO DISCOVER  
**JESUS**



**GREENVILLE  
OAKS** CHURCH  
OF CHRIST

# GREENVILLE OAKS IS GROWING



As we find our footing in a post-pandemic world, **God is blessing Greenville Oaks** and positioning us to make a greater impact in our community.

- Our **in-person attendance** is steadily increasing and our *Gathering Circles* are growing. (*#CombatIsolation*)
- Our **#ForCollinCounty efforts** are making a difference in our neighborhoods. (*#LoveFirst*)
- Our thriving **children and student ministries** are nurturing future generations. (*#EquipFamilies*)
- Our **Rooted** and **Going Deeper** discipleship experiences are building momentum and transforming lives. (*#CelebrateTransformation*)



## OUR VALUES:

### LOVE FIRST

We love because Jesus loves us and every person on earth. Because God extended His grace to us, we extend it to those from every walk of life.

### COMBAT ISOLATION

God created us for a life connected with others. We are intentional about cultivating godly, life-giving relationships with each other.

### EQUIP FAMILIES

As families grow in Jesus together, we serve as a partner — coming alongside them to support, encourage, and equip.

### DEMONSTRATE SELFLESSNESS

We represent Jesus when we purposefully set out to serve others in our home, place of work, school, church, and community.

### CELEBRATE TRANSFORMATION

As we love others, build healthy godly relationships, empower families, and serve selflessly — we never cease to celebrate the life change that leads to the abundant life in Jesus!

# OUR CHALLENGE AND OPPORTUNITY

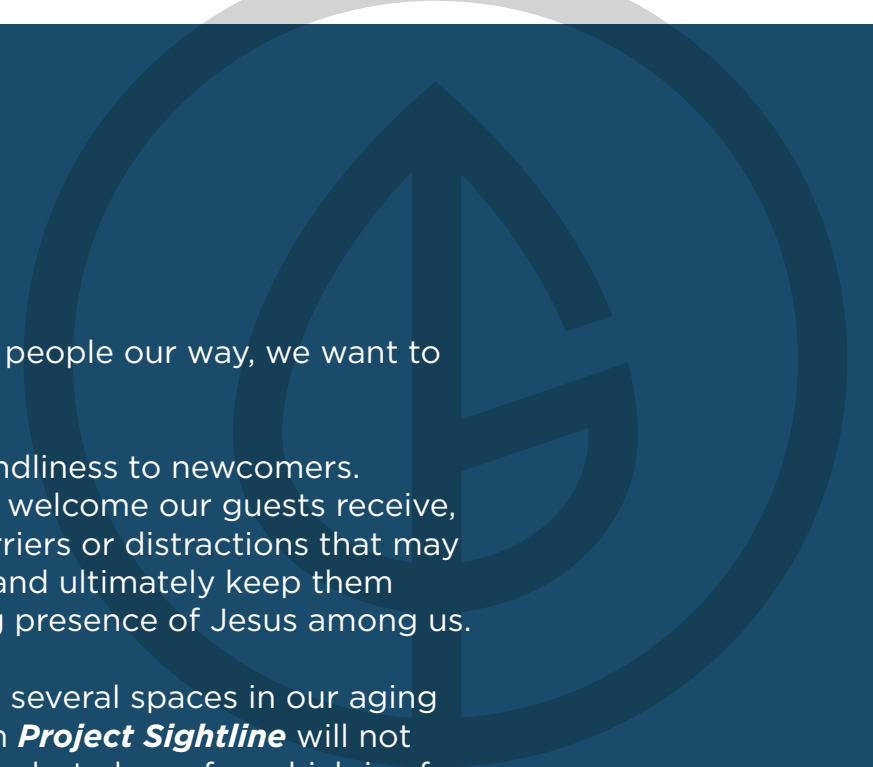
As the Spirit continues to send new people our way, we want to be ready for them.

Greenville Oaks is known for its friendliness to newcomers. (*#LoveFirst*) To accentuate the warm welcome our guests receive, we want to remove any physical barriers or distractions that may undercut our hospitable intentions and ultimately keep them from encountering the life-changing presence of Jesus among us.

This means updating and improving several spaces in our aging facilities. The updates we envision in ***Project Sightline*** will not only make our building more inviting, but also safer, which is of utmost importance to our guests, especially those with children.

The driving motivation for ***Project Sightline*** is to better position us to accomplish our Mission to “*inspire people to follow Jesus.*” It also challenges us to grow deeper into our Core Values and live them out in increasingly tangible ways. (*#CelebrateTransformation*)

Working within our current footprint, ***Project Sightline*** will replace distracting barriers and difficult to secure spaces with hospitable, visually appealing, age-appropriate, and safer environments in which our guests can experience, explore, and respond to the gospel.



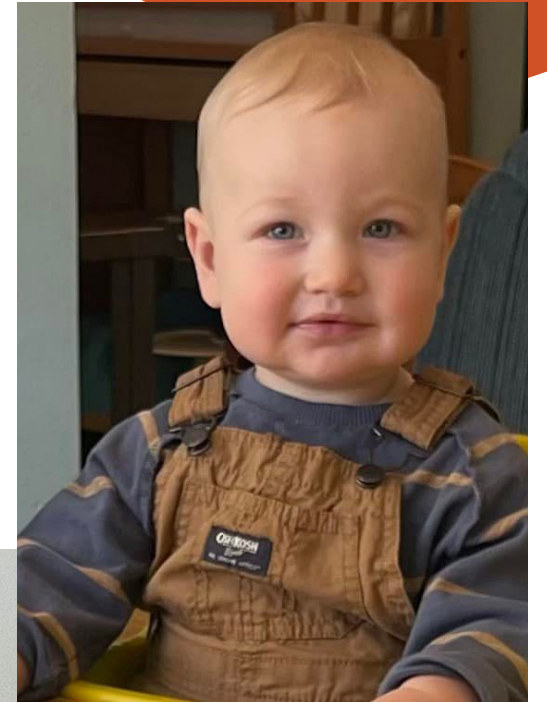


# THE PLAN

REMOVE  
**PHYSICAL  
BARRIERS**  
AND  
**DISTRACTIONS**  
TO CREATE CLEAR  
**SIGHTLINES**  
FOR PEOPLE  
TO SEE  
**JESUS**

Beginning in May of this year, ***Project Sightline*** will address and improve four essential areas:

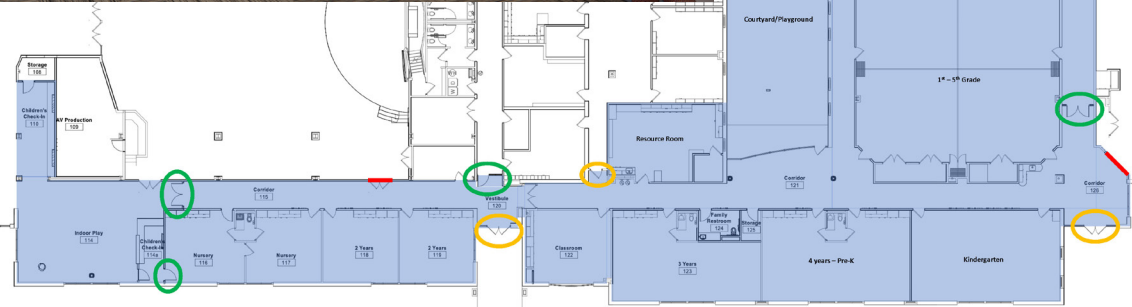
- ◆ **Children's Ministry (GO Kids)**
- ◆ **Lobby/Gathering/Restrooms**
- ◆ **Worship Center**
- ◆ **Outdoor Signage**





# CHILDREN'S MINISTRY

Secure GO Kids spaces (Nursery - 5th grade) by adding **access-controlled doors** to limit traffic to those with an electronic card key and to have the ability to electronically lock down the area in case of an emergency.



Repurpose storage space to create an immediately visible central **child check-in** and **family resource area** right off the front lobby on the west end of the building. (#EquipFamilies)

Create a clear sightline and path from the check-in area to a new 980 square foot **Children's lobby** and **indoor play area**.





# LOBBY/GATHERING/RESTROOMS



Repurpose seldom used space to create a **new gathering area** with an electric fireplace and inviting living room-type seating arrangements on the north side of the main entrance area. (*#CombatIsolation*)

Improve the **Café area** by replacing the temporary counters with a new built-in counter for self-service coffee and adding another gathering area around a large island with seating.

Refresh and update the **Restrooms** in the main foyer with automatic water and soap dispensers, automatic flush features, and new child-height sinks.

Convert three former children's classrooms (which will be relocated to the new secure children's area) in the northwest hallway into comfortable spaces for **adult gathering circles** and other **meetings**.

Convert one of the Prayer Rooms into a more **accessible Nursing Mother's Room**.



# WORSHIP CENTER



Minimize the distraction of the popping metal roof and **improve the sound quality** for both in-person and on-line worshippers by adding soundproofing material to the ceiling.

Replace the rear projector and screen with three LED video screens mounted lower on the walls and angled to **provide better sightlines** and **higher quality images**.

Improve on-line and live **video quality** with new 4K cameras, adjusted lighting placement, and painting walls with a more video-friendly color.

Improve on-line and live **audio quality** by creating a production studio from underused space to enable separate audio mixes for in-person and on-line gatherings.

**Increase stage space** and reduce distracting clutter by filling in the front steps.

# OUTDOOR SIGNAGE



Extend the positive value of the interior improvements to the exterior by replacing the current monument sign with a more **contemporary, eye-catching LED sign** that allows us to communicate key information to potential guests.



Add a large logo to the **west façade** to make our building more visible and recognizable.





## THE RESULTS

While we will all benefit from and enjoy the results of **Project Sightline**, we are not doing this primarily for ourselves. (*#DemonstrateSelflessness*) We're doing it for those who are not yet part of Greenville Oaks, especially those who are not yet following Jesus and need encouragement and inspiration to take Jesus seriously. (*#Mission*)

*Creating space to promote*  
**CONNECTION and a CLEAR**  
**SIGHTLINE to JESUS.**

it will make it easier for us to connect with our guests so they will feel comfortable in our space — a space from which we hope they will have a clear sightline to Jesus — and like us, be forever changed by what they see. (*#CelebrateTransformation*)

We know people are not drawn into a relationship with Jesus by renovation projects. They are drawn by the power of the Spirit and through the witness and example of Christ-followers. Our hope for **Project Sightline** is that

## FINANCIAL INVESTMENT

Everyone is invited to participate in whatever way they can. **Over the next three years**, our goal is to raise most of the estimated \$1.6 - \$1.8 million cost of this project. With enthusiastic participation from our church family, this plan can be accomplished without a large amount of additional debt. We have secured private, below market rate financing. **One family has already committed to match, dollar for dollar, the first \$200,000 given.** The more we raise, the less we will need to finance, which allows for more available resources for ongoing ministry. (*#DemonstrateSelflessness*)



ALL WHOSE  
HEARTS WERE  
**STIRRED**  
AND WHOSE  
SPIRITS WERE  
**MOVED**  
CAME AND  
BROUGHT  
THEIR SACRED  
**OFFERINGS**  
TO THE  
**LORD**

EXODUS 35:21



# YOUR **ROLE**

As you seek to discern your level of support for ***Project Sightline***, your church leaders invite you to commit to three simple steps.

## STEP 1:

### **PRAY**

As you learn more about this plan, please begin to discern in prayer how God is leading you to participate.

## STEP 2:

### **SURRENDER**

Take inventory of your assets and lifestyle. Ask God to help identify expenses you can delay or forgo to sacrificially support this project. Be open to God's promptings and surrender to His direction. You may think you have arrived at a conclusion, only to have the Holy Spirit nudge you to reconsider.

## STEP 3:

### **MAKE A COMMITMENT**

Trust God and make up to a three-year commitment, beyond your regular contribution, to ***Project Sightline***.

